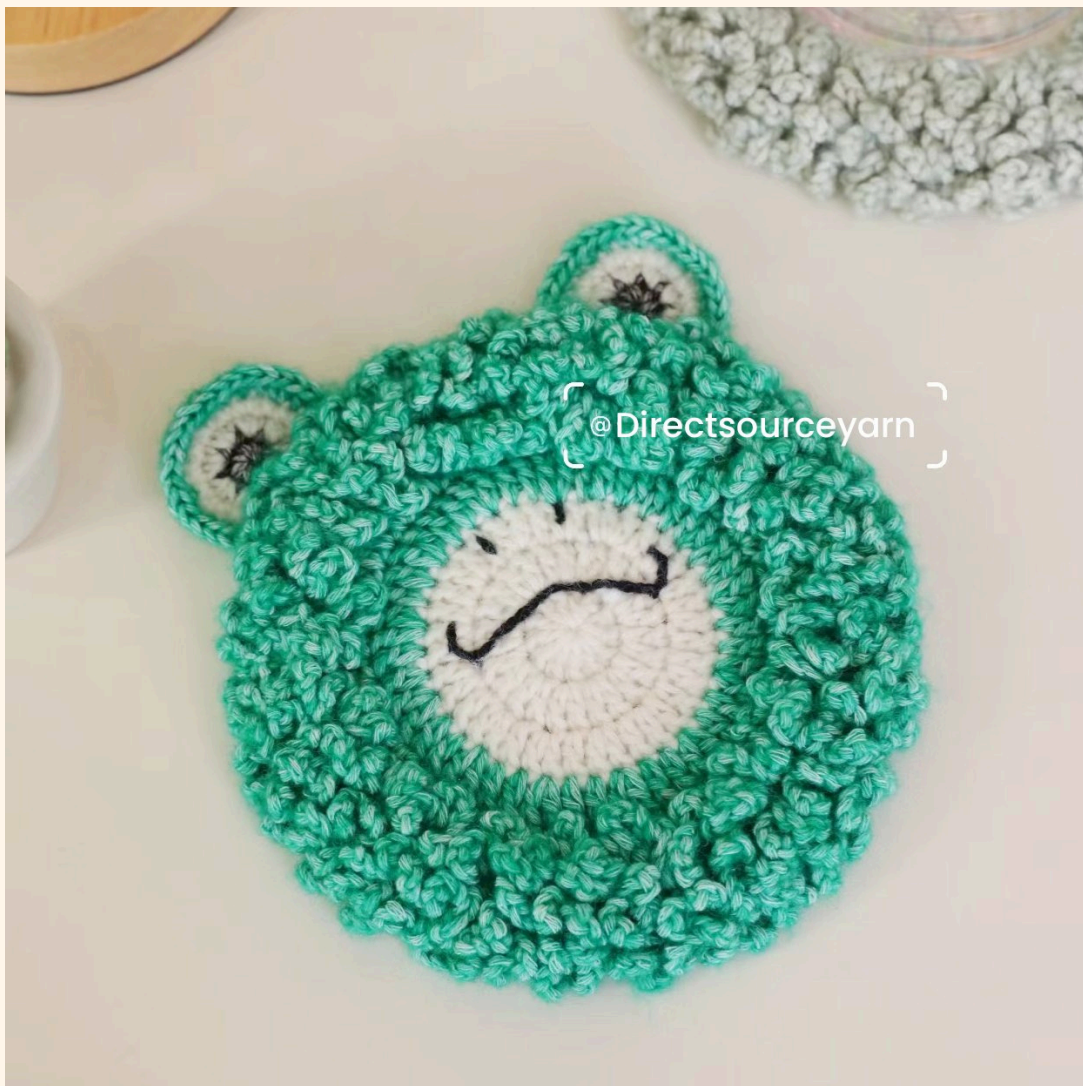


Cute Frog Coaster

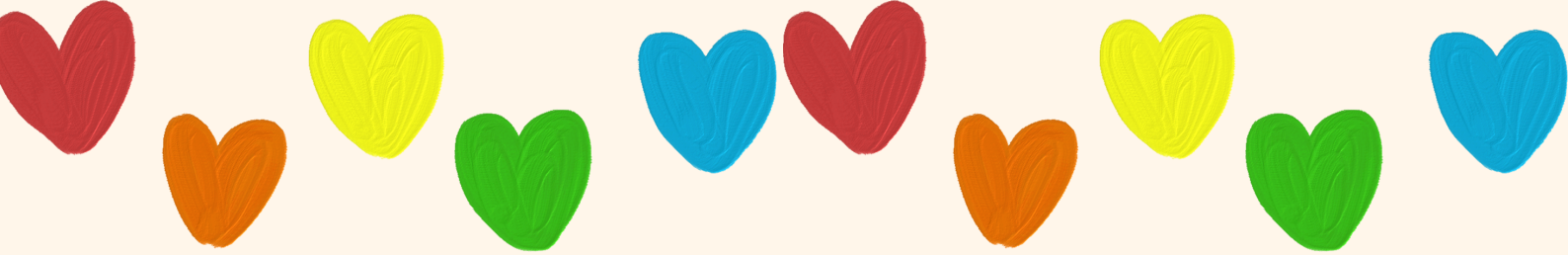
– Free Crochet Pattern

Brighten up your coffee table with this charming and funny Crochet Frog Coaster! This easy crochet pattern is perfect for beginners and a delightful project for seasoned crochet enthusiasts alike. With its adorable green frog and cute white features, it's guaranteed to make you smile.



Tag me @directsourceyarn





Cute Frog Coaster

– Free Crochet Pattern

Materials You'll Need

- Yarn
- Crochet hook suitable for your yarn weight
- Tapestry needle – For embroidery and weaving in ends
- Black embroidery thread – For the facial features
- Scissors

Abbreviations

MR = Magic Ring

Rnd = Round

SC = Single Crochet

DC = Double Crochet

INC = Increase (2 Single Crochets in the same stitch)

DC INC = Increase Double Crochet (2 Double Crochets in the same stitch)

ST / STS = Stitch / Stitches

FLO = Front Loops Only

BLO = Back Loops Only

FO = Fasten Off

VISIT OUR WEBSITE TODAY TO GET PREMIUM YARNS AT UNBEATABLE PRICES –
ALL OF THEM ARE CURRENTLY ON SALE!

Sand Washed Yarn US\$2.99

[HTTPS://DIRECTSOURCEYARN.COM/PRODUCT/SAND-WASHED-
BLENDED-COTTON-YARN/](https://directsourceyarn.com/product/sand-washed-blended-cotton-yarn/)



Discover Sand Washed Yarn, our premium cotton-blend yarn crafted with 78% cotton and 22% acrylic. Direct source from the same factory as the popular Stone Washed Yarn and River Washed Yarn from Scheepjes, this sport-weight yarn offers a soft, textured feel with a unique sandblasted effect. Perfect for garments, accessories, and home decor, it provides excellent stitch definition and durability.

Spinrite®

Walmart*

Michaels
THE ARTS AND CRAFTS STORE

HOBBY
LOBBY



RUSTA

Scheepjes
INSPIRATION IN EVERY BALL OF YARN

ROSSMANN

Yarnspirations
spark your inspiration!

Face

Use white yarn

Rnd 1: 13 DC in magic ring [13]

Rnd 2: 13 DC INC [26]

Rnd 3: (DC, DC INC) x13 [39]

Change to green yarn

Rnd 4: (2 DC, DC INC) x13 [52]

Rnd 5: BLO (3 DC, DC INC) x13 [65]

Rnd 6: BLO (2 DC, DC INC, 2 DC) x13 [78]

Fasten off

Textured Border

Use green yarn

Work on round 4-6: FLO [SC, CH 5] in the same stitch, repeat it to the end of each round.



Eye (make 2)

Use black yarn

Rnd 1: 6 SC in magic ring [6]

Change to white yarn

Rnd 2: 6 INC [12]

Rnd 3: (SC, INC) x6 [18]

Change to green yarn

Rnd 4: 18 SC [18]

Cut the yarn, leaving a long tail for sewing.

Add the Frog's Facial Features

- Using black embroidery thread, stitch a funny curved mouth to give the frog an expressive look.
- Secure the stitches and weave in any loose ends.

Finishing Touches

Your crochet frog coaster is now complete! This adorable crochet coaster pattern is perfect for gifting or adding a touch of fun to your coffee table.

